

Tuberkuloosi hiv-positiivisilla huumeiden käyttäjillä: kuinka hoidan käytännössä

Pekka Tuomola

Director of Division

Head of Centre for Torture Survivors in Finland

MD, special Competency in Addiction Medicine

Psychotherapist

Helsinki Deaconess Institute

Substance Abuse Welfare Work and Mental Health Work


Helsinki Finland

pekka.tuomola@hdl.fi

Service center for hiv-positive drug-abusers

- 237 hiv-positive drug-abusers
- middle age 45 years
- 30% women
- 70 died (pneumonia , trauma , overdose liver cirrhosis,AIDS on 4 patients)
- all are using drugs intravenously , 35% opiates and 65% amphetamin
- 50 on maintenance therapy with methadon
- 102 on antiretrovirus therapy

Sociodemographic profile of injecting drug users in HIV outbreak in Helsinki region

	Early cases n=98	Recent cases n=47
Age, mean (range)*	32 (16-56)	36 (20-63)
Male (%)	70,40 %	78,30 %
Main drug Amphetamin	74,10 %	77,80 %
Duration of injecting (years, mean range)*	10,7 (0-32)	14,3 (1-37)
Homeless	66,30 %	66,00 %
employment	2,20 %	2,40 %
Experience of Prison	67,70 %	69,70 %
Lack of further Education	83,80 %	84,40 %
History of addiction rehabilitation and / or detoxification	60,30 %	71,90 %
History of psychiatric hospital Care	40,60 %	50,00 %
 HELSINGIN DIAKONISSALAITOS First CD4 count 10/l	Helsinki 24.03.2010 579	Pekka Tuomola 3 431

Available Services

- Needle exchange program
- Hiv-testing
- Food, facilities to have a shower, washing machine
- Lab.services
- Doctor services
- Nurses services
- Social services
- Medication
 - Methadone maintenance program
 - Hiv-medication
 - Other medication
- Acupuncture
- Homecare
- Temporary Accomodation, supported housing
- Harmreduction Mobile Unit
- Maintenance treatment (for hiv negative)

Service center staff

Helsinki Deaconess Institute

- Director
- Physician, a specialist of substance abuse
- 8 nurses
- 2 auxillary nurses
- 2 mental health nurses
- 2 care workers
- 9 general assistants
- 2 social welfare workers
- Secretary
- 2 mainntenance staff
- Community service employee

Helsinki social service department for homeless people

- Social worker
- social welfare worker

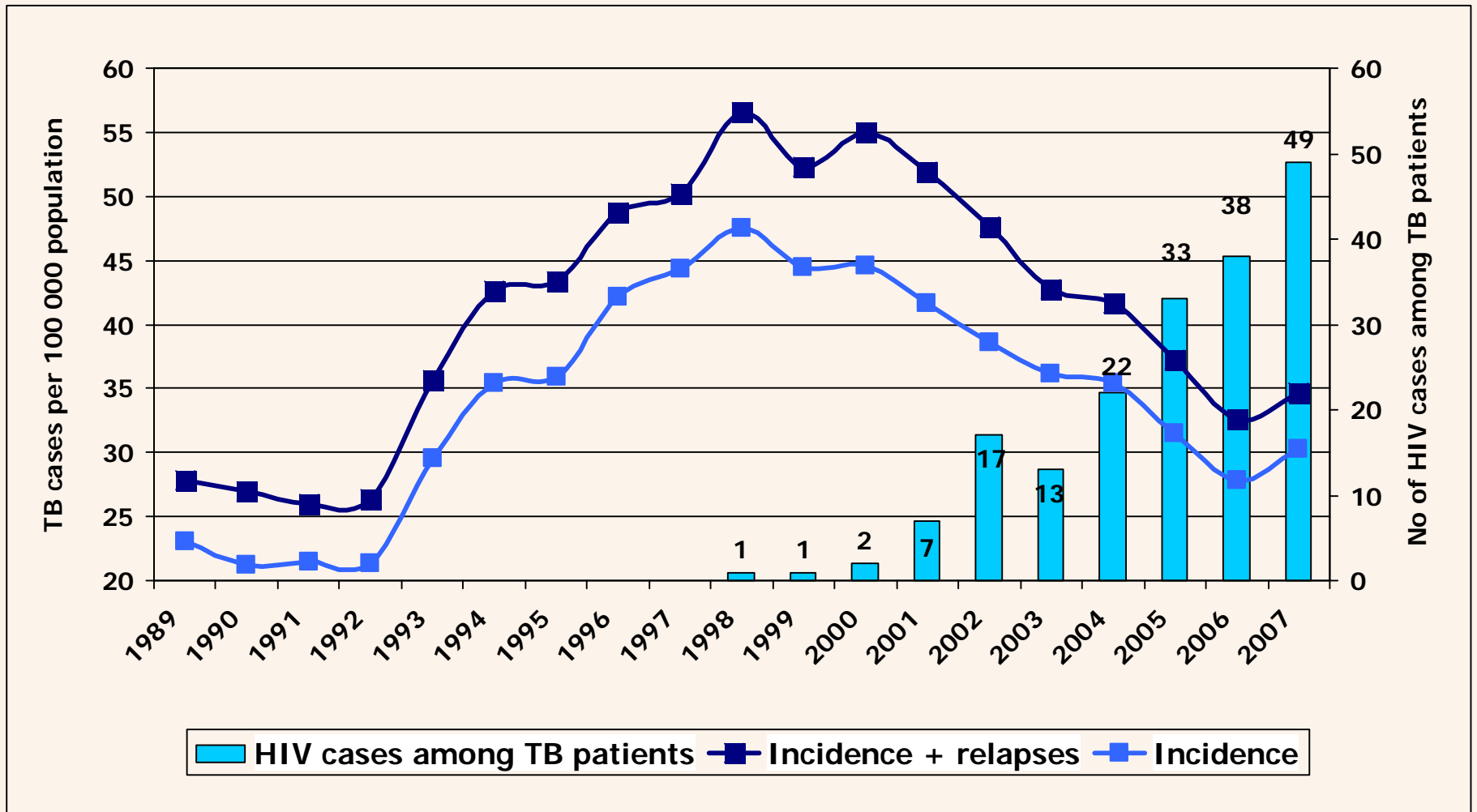
Helsinki University Central Hospital, Infectious Diseases Division

- Specialist of infectious diseases
- Nurse specialist of infectious diseases
- medical social worker

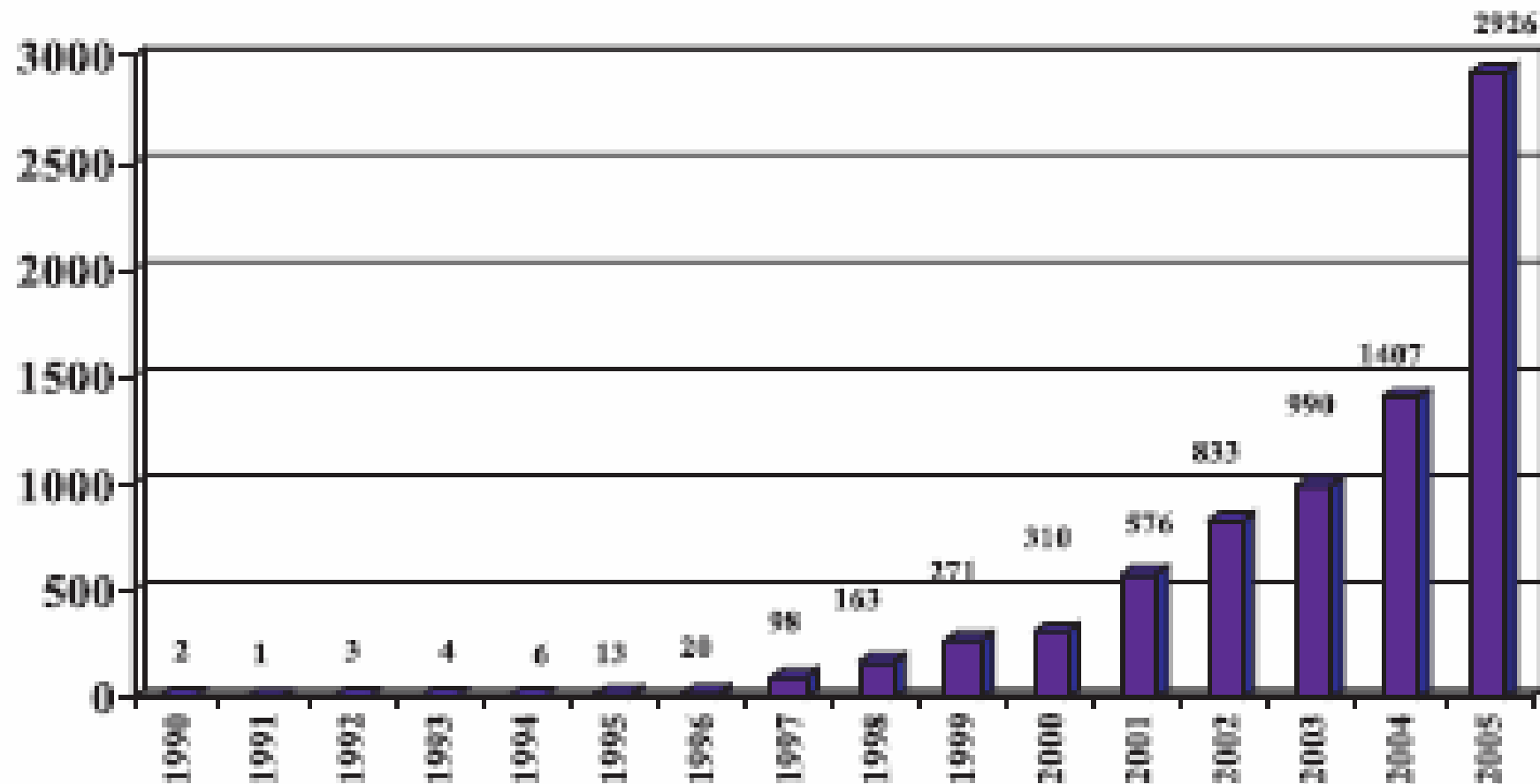
Sodexo Oy

- Food and sanitation services

TB Incidence and TB+HIV cases by Year, Estonia, 1989–2007



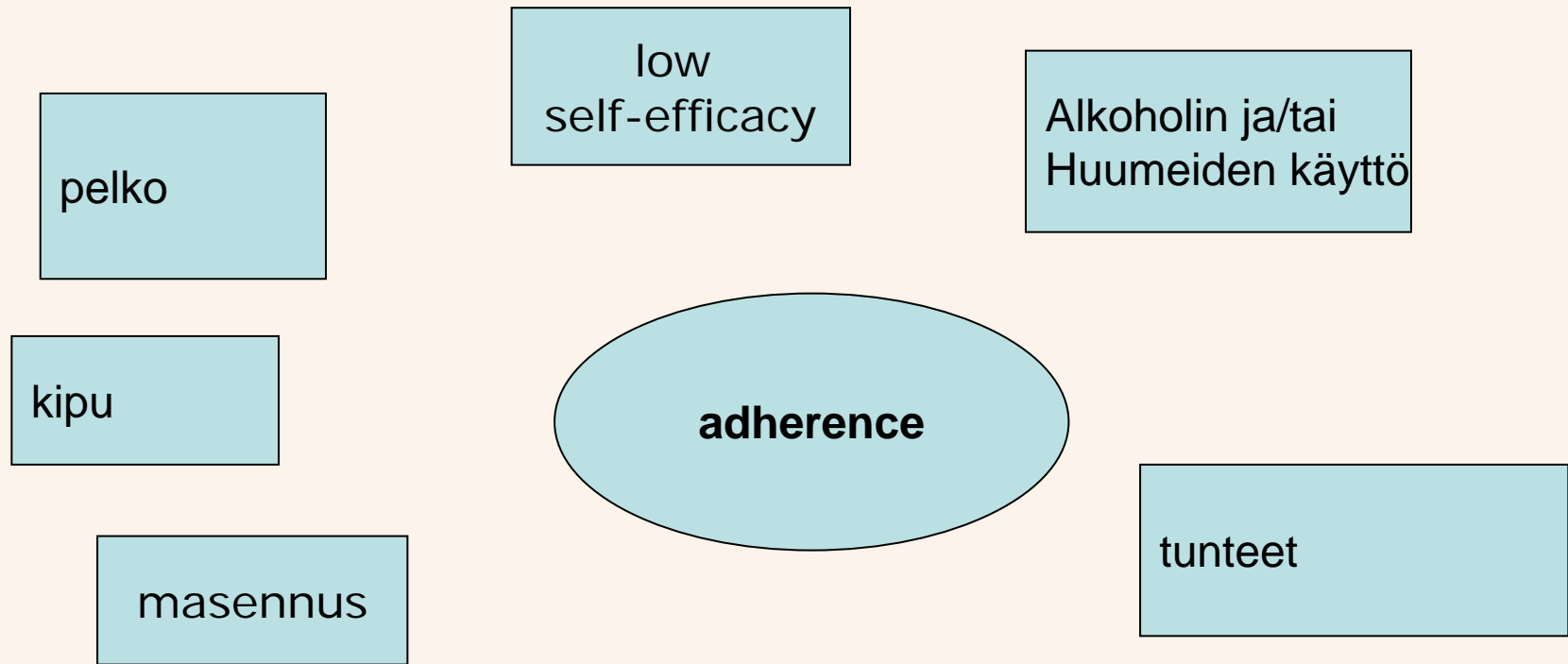
Число зарегистрированных новых случаев туберкулеза, сочетанного с ВИЧ-инфекцией, в России по годам (по данным МЗ СР РФ без УИС)



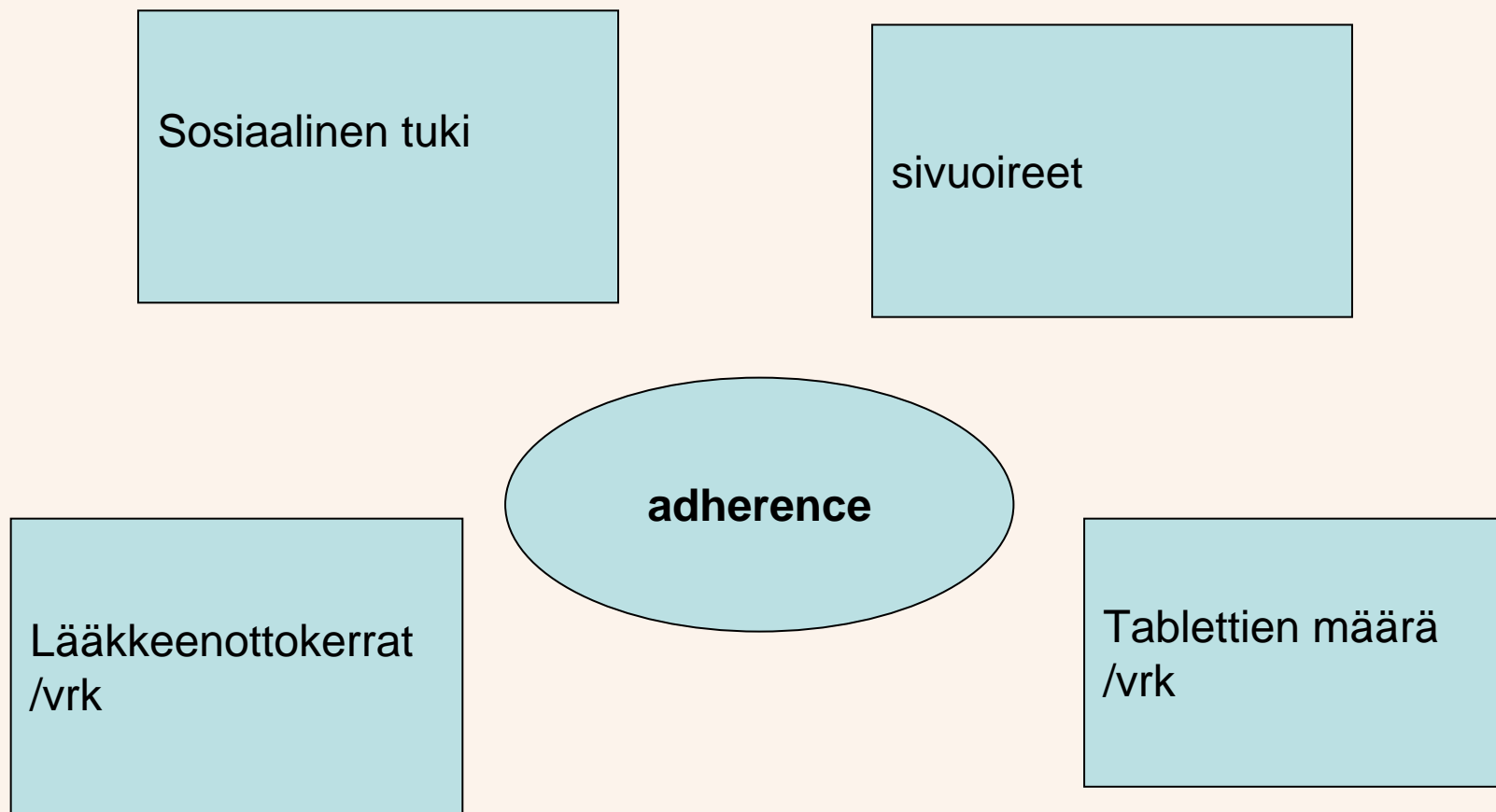
Why are the tbc/hiv-patients discharged out from the hospitals in Moscow 2003

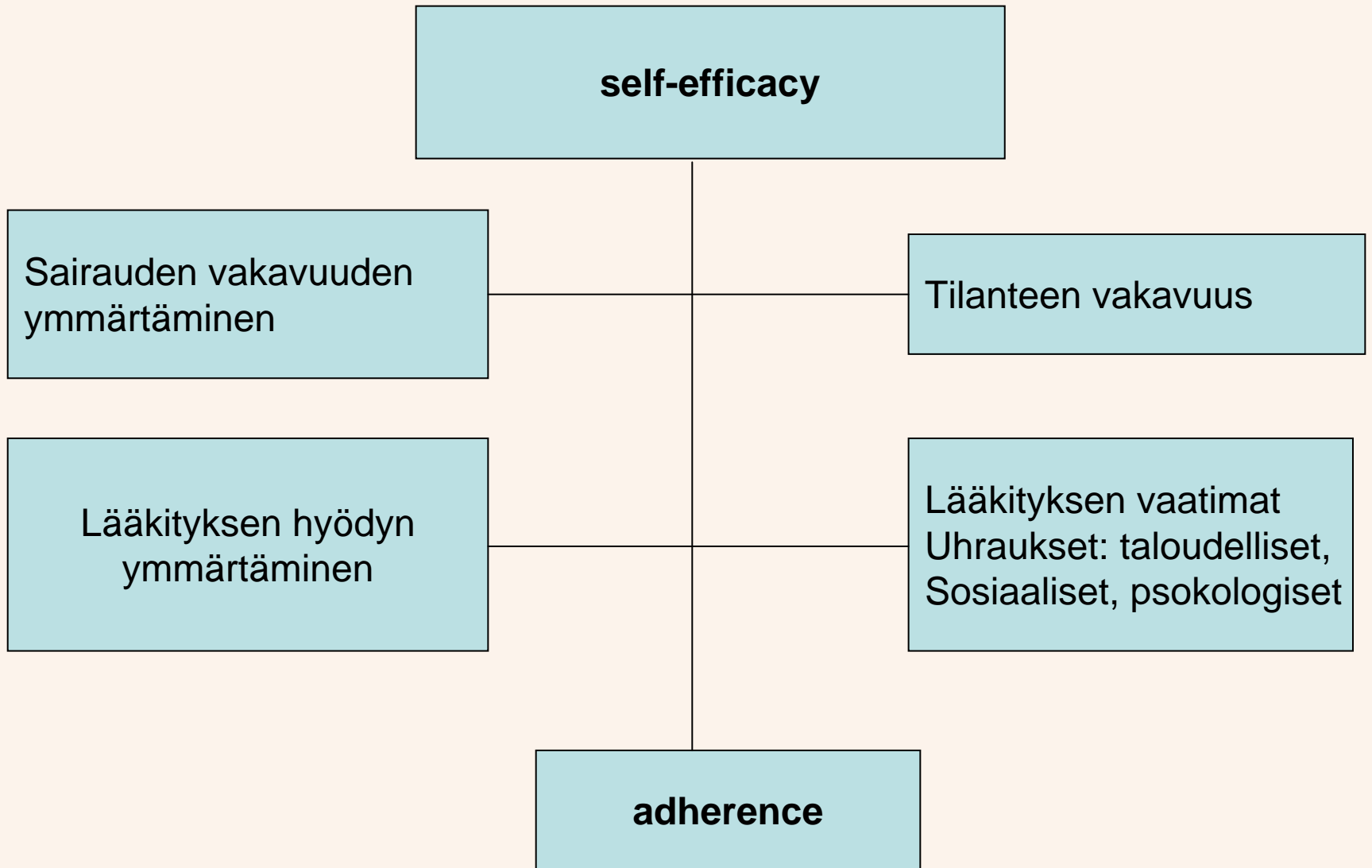
Reason	tbc/hiv % (82)	tbc % (150)
abuse of alcohol and/or drugs	37,8	28,7
left by himself	20,7	25,3
cured,outpatient clinic	29,3	33,3
death	12,2	12,7
total	100	100

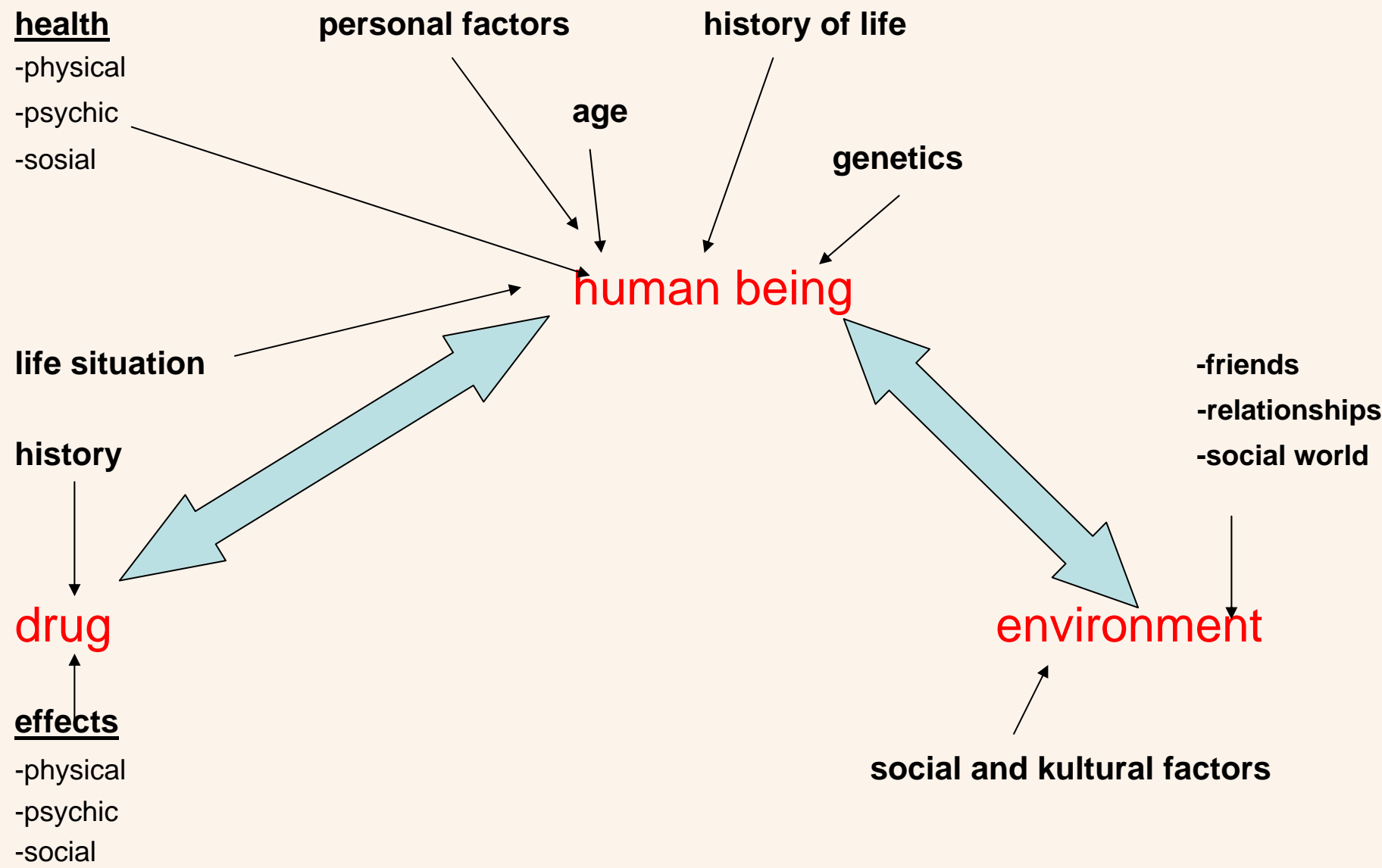
Factors which can effect on adherence



Factors which can effect on adherence 2



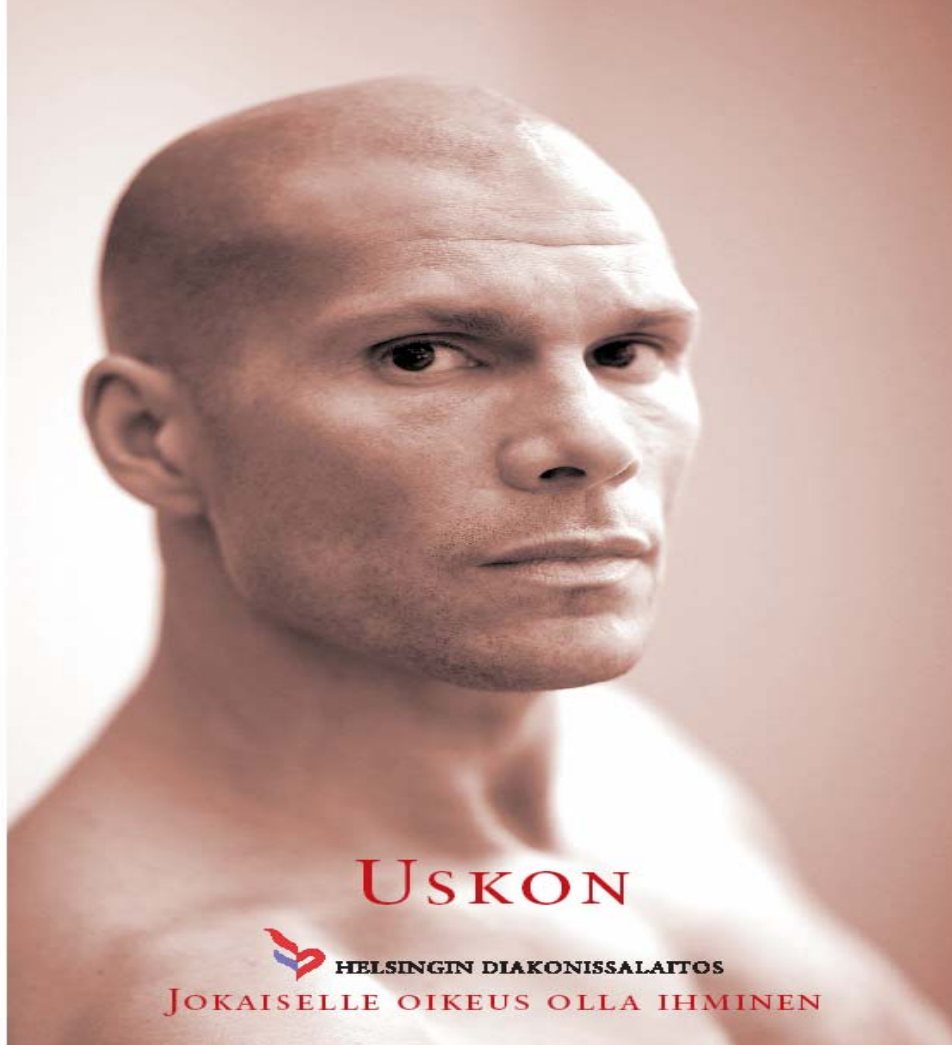






HELSINGIN DIAKONISSALAITOS

Helsinki Deaconess Institute-
For everyone, the right
to be a human being



USKON

 **HELSINGIN DIAKONISSALAITOS**

JOKAISELLE OIKEUS OLLA IHMINEN